



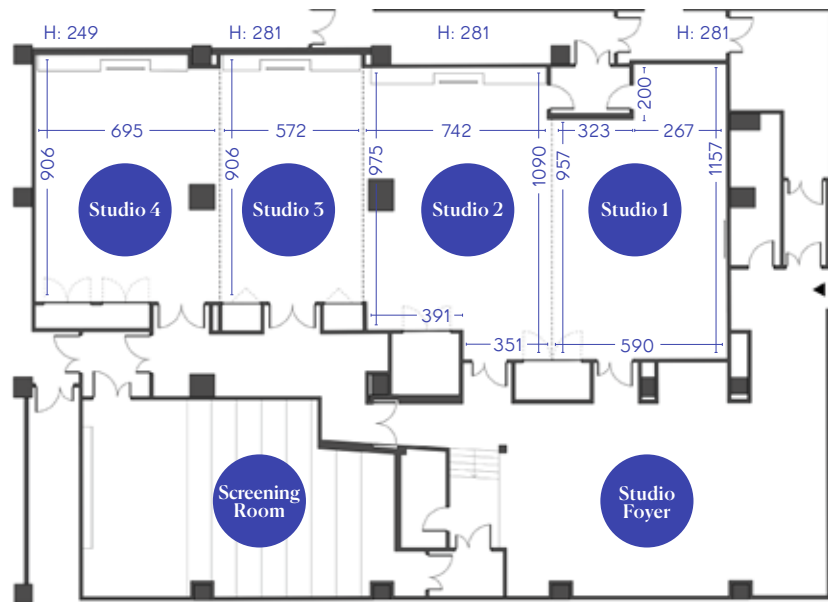
SEA CONTAINERS

LONDON

# Event Spaces



# Studio Floor



	Sq. Ft.	Sq. M.	Reception (pax)	Banquet (pax)	Theatre (pax)	Classroom (pax)	U-Shape (pax)	Boardroom (pax)	Cabaret (pax)
Studio 1	667	61	70	40	68	36	24	24	30
Studio 2	796	74	80	48	80	54	30	24	36
Studio 3	548	51	60	40	63	30	24	24	30
Studio 4	667	62	60	40	67	36	21	24	30
Studios 1 & 2	1,830	170	150	88	140	84	39	36	66
Studios 3 & 4	1,475	137	120	80	120	72	-	-	60
Studios 1, 2 & 3	2,487	231	170	128	180	108	-	-	90
Studios 1, 2, 3 & 4	3,305	307	200	176	-	-	-	-	-
Studio Foyer	1,302	121	110	-	-	-	-	-	-
Screening Room	968	90	-	-	56	-	-	-	-
12 <sup>th</sup> Knot	4,030	375	300	108	80	-	-	-	-
Lyaness	2,580	240	150	-	-	-	-	-	-
Riverview Apartment	1,206	112	40	16	-	-	-	16	-
Gallery (Ground)	1,291	120	120	-	-	-	-	-	-
Gallery (Mezzanine)	548	51	-	-	-	-	-	22	-
Private Dining Room	339	31	-	22	-	-	-	-	-

Note: Measurements are in centimetres



# Studio 1

## Size

61 m<sup>2</sup> / 667 ft<sup>2</sup>

## Capacity

	People
Banquet	40
Classroom	36
U-Shape	24
Theatre	68
Boardroom	24
Cabaret	30

## Room Notes

PA system & microphone are not advised because of the room size. However PA can be set up if requested by the client for additional charge.



## Includes

- 85" Panasonic HD LCD screen.
- Connections for computer and additional video sources: HDMI, VGA + PC Audio.
- Hotel background music with separate in room volume control.



# Studio 2

## Size

74 m<sup>2</sup> / 796 ft<sup>2</sup>

## Capacity

	People
Banquet	48
Classroom	54
U-Shape	30
Theatre	80
Boardroom	24
Cabaret	36

## Room Notes

PA system & microphone are not advised because of the room size. However PA can be set up if requested by the client for additional charge.



## Includes

- 65" Samsung HD LCD screen.
- Connections for computer and additional video sources: HDMI, VGA + PC Audio.
- Hotel background music with separate in room volume control.



# Studio 3

## Size

51 m<sup>2</sup> / 548 ft<sup>2</sup>

## Capacity

	People
Banquet	40
Classroom	30
U-Shape	24
Theatre	63
Boardroom	24
Cabaret	30

## Room Notes

PA system & microphone are not advised because of the room size. However PA can be set up if requested by the client for additional charge.



## Includes

- 65" Samsung HD LCD screen.
- Connections for computer and additional video sources: HDMI, VGA + PC Audio.
- Hotel background music with separate in room volume control.



# Studio 4

## Size

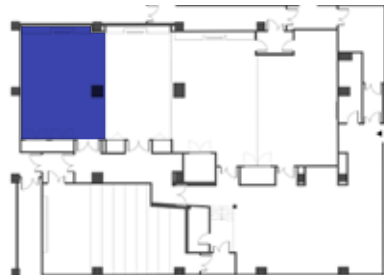
62 m<sup>2</sup>/ 667 ft<sup>2</sup>

## Capacity

	People
Banquet	40
Classroom	36
U-Shape	21
Theatre	67
Boardroom	24
Cabaret	30

## Room Notes

PA system & microphone are not advised because of the room size. However PA can be set up if requested by the client for additional charge.



## Includes

- 65" Samsung HD LCD screen.
- Connections for computer and additional video sources: HDMI, VGA + PC Audio.
- Hotel background music with separate in room volume control.







# Studio 1 & 2

## Size

138 m<sup>2</sup> / 1830 ft<sup>2</sup>

## Capacity

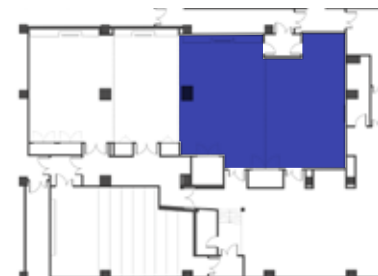
	People
Banquet	88
Classroom	84
U-Shape	39
Theatre	140
Boardroom	36
Cabaret	66

## Room Notes

PA system & microphone are recommended and can be set up upon request at an additional charge.

## Includes

- 85" Panasonic HD LED screen or 16:10 HD Projector.
- Connections for computer and additional video sources: HDMI, VGA + PC Audio.
- Hotel background music with separate in room volume control.





# Studio 3 & 4

## Size

137 m<sup>2</sup> / 1475 ft<sup>2</sup>

## Capacity

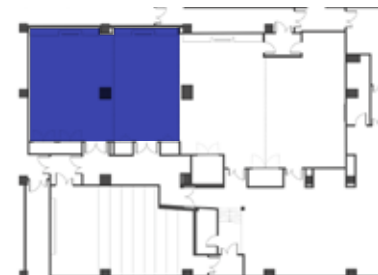
	People
Banquet	80
Classroom	72
Theatre	120
Cabaret	60

## Room Notes

PA system & microphone are recommended and can be set up upon request at an additional charge.

## Includes

- 2x 65" Samsung screens that can be linked.
- Connections for computer and additional video sources: HDMI, VGA + PC Audio.
- Hotel background music with separate in room volume control.





# Studio 1, 2 & 3

## Size

231 m<sup>2</sup> / 2487 ft<sup>2</sup>

## Capacity

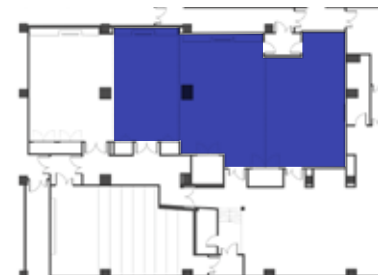
	People
Banquet	128
Classroom	108
Theatre	180
Cabaret	90

## Room Notes

PA system & microphone are recommended and can be set up upon request at an additional charge.

## Includes

- 85" Panasonic HD LED screen or 16:10 HD projector.
- Connections for computer and additional video sources: HDMI, VGA + PC Audio.
- Hotel background music with separate in room volume control.





# Studio 1, 2, 3 & 4

## Size

307 m<sup>2</sup> / 3305 ft<sup>2</sup>

## Capacity

	People
Banquet	176

## Room Notes

PA system & microphone are recommended and can be set up upon request at an additional charge.

## Includes

- 2.5m 16:10 projection screen with HD projector.
- Electronic ceiling-mounted screen or 85" LCD full HD screen.
- Connections for computer and additional video sources: HDMI, VGA + PC Audio.
- Hotel background music with separate in room volume control.





# Screening Room

## Size

90 m<sup>2</sup> / 968 ft<sup>2</sup>

## Capacity

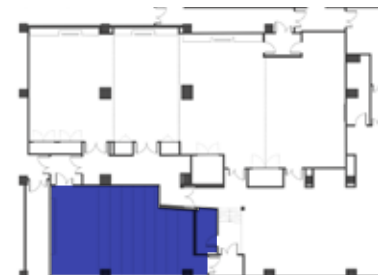
	People
Seats	56

## Room Notes

PA system & microphone are not advised because of the room size. However PA can be set up if requested by the client for additional charge.

## Includes

- Connections for computer and additional video sources: HDMI Input from the front of the room.
- Barco DP4K-23B (4096 x 2160) (24K lumens).
- CP 750 and 7.1 Dolby surround sound system.
- Projection screen 1.75m x 3m flat or 4.25m scope.
- Full Crestron control for projection, source selection and volume.
- Projector compatible formats: DCP, HDCAM\*, HDCAM SR\*, DVD, Blu-Ray, Apple TV, Satellite and terrestrial TV reception and distribution system.





# Gallery

## Size

Ground floor: 120 m<sup>2</sup> / 1291 ft<sup>2</sup>  
 Mezzanine: 51 m<sup>2</sup> / 548 ft<sup>2</sup>

## Capacity

	People
Reception	120
Boardroom	22

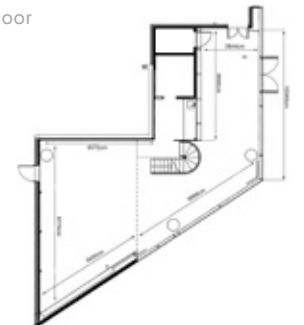
## Includes

- Lounge.
- Reception desk.
- Boardroom table (seating up to 22).
- Custom designed furniture by Tom Dixon.
- 55" Samsung HD LCD widescreen TV.\*

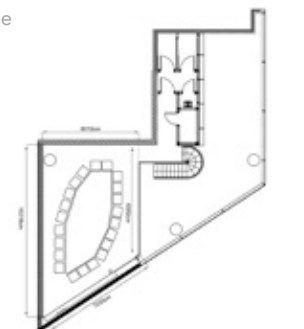
## Room Notes

Acting as an extension of the cultural area merging art with the Southbank, the Gallery features industrial interiors with exposed full daylight allowing for an ideal private meeting space. Located on the ground floor, the space transforms between a communal group check in area with its own reception desk and lounge space to a reception for up to 120 guests within seconds. For more intimate meetings, the mezzanine offers a boardroom for up to 22 guests with a breakout area on the lower level where catering is available showcasing an ideal space for any occasion.

Ground floor



Mezzanine



\* Additional Charges Apply

# 12<sup>th</sup> Knot

## Size

375 m<sup>2</sup> / 4,030 ft<sup>2</sup>

## Capacity

	People
Reception	300
Banquet	108
Informal theatre	80

## Room Notes

Perched atop Sea Containers London, 12th Knot is our elegant rooftop playground. With an extensive list of the world's best champagnes alongside seasonal and ingredient-led cocktails, the space can host receptions and parties for up to 300 guests. Epitomising the vibrancy of the South Bank against the backdrop of the River Thames, 12th Knot comes alive as the sun goes down and our DJs and live bands kick off.

## Includes

- Electronic ceiling-mounted screen.
- Connections for computer: HDMI, VGA and PC Audio.
- 3m wide 16:10 screen.
- Full HD Panasonic projector with HDMI and VGA/Minijack inputs.
- Bose ceiling speakers for hotel music and PC audio.
- Full Crestron control for projection, music selection and volume.
- 2x Pioneer CDJ2000 Nexus and 1x DJM 900 Nexus.
- EV Floor Monitor.
- New sound system – Function One.
- Including: 4x Function One F1201 Main Speakers, 2x Function One F101 DJ Monitors, 3x Function One F55 Peripheral Speakers and 2x Function One BR118 Bass Speakers.
- 63a power in Cloakroom and 13 floor boxes with 13a power around the room.







# Lyanness

## Size

240 m<sup>2</sup> / 2,580 ft<sup>2</sup>

## Capacity

	People
Reception	150

## Room Notes

It's a cocktail bar that goes beyond the simple focus of what's in your glass. In a vibrant space overlooking the Thames, Lyanness harks back to the glamour of the most opulent homes with an energy befitting of the best parties. The interiors, designed by Jacu Strauss, feature Lyanness' signature electric blue alongside a standout green marble bar.

## Includes

- Connections for computer: HDMI and VGA/Minijack inputs.
- Bose ceiling speakers for hotel music and PC audio.
- Full Crestron control for music selection and volume.



# Riverview Apartment

## Size

112 m<sup>2</sup> / 1,206 ft<sup>2</sup>

## Capacity

	People
Reception	40
Boardroom	16

## Room Notes

Taking comfort to new levels, our Riverview Apartment showcases London at its finest, with breath-taking city and river views from multiple angles. This 1200 square foot space is reminiscent of the timeless elegance of a 1920s cruise liner, combining contemporary features with cutting-edge modern design. Housing a boardroom table for up to 16 guests, the space is the ideal setup for meetings, receptions, dinners and special events.

## Includes

- Sitting Room.
- Guest Cloakroom.
- Dining Table (seating up to 16).
- Wet Bar.
- Custom designed furniture by Tom Dixon.
- Teleadapt Media Panel.
- US/UK/EUR Power Sockets  
Interconnecting Rooms Available.
- 55" Samsung HD LCD widescreen TV.\*
- Valet Parking.\*
- Room Service.\*
- In Room Spa Services.\*
- Malin & Goetz Products.



\* Additional Charges Apply



# agua London

## Size

557.9 m<sup>2</sup> / 6,005 ft<sup>2</sup>

## Capacity

	People
Total Space	60
Boutique Lounge	20
Glamour Room	8
Relaxation Room	20
Treatment Room	6*

## Room Notes

Curving walls and luminous corridors create a truly unique, maritime inspired events space. We can thank award winning designer Tom Dixon for that. The spa can be exclusively hired for up to 60 guests. Or for smaller parties of up to 8 in our Glamour Lounge. Six individual treatment rooms are also available. In other words, you tell us and we'll make it happen.

\* One Couples Room

## Includes

- Boutique reception.
- Glamour room – 2 manicure stations, 2 pedicure stations.
- Ladies changing suite – locker and shower facilities available.
- Ladies steam bath and rain shower.
- Men's changing suite – locker and shower facilities available.
- Men's steam bath and rain shower.
- Spa steam experience cabin – 'Mud Room' for wet treatments.
- SPA lounge at agua (10-16 guests).
- Public lift access or VIP lift access (requires special arrangement).
- Treatment rooms: (6 treatment rooms, including a couples room).



# Private Dining Room

## Size

31.5 m<sup>2</sup> / 339 ft<sup>2</sup>

## Capacity

	People
Banquet	22

## Room Notes

Located within Sea Containers Restaurant and with its own secluded south facing terrace, the private dining room provides an intimate setting for up to 22 guests. Featuring bespoke gold dining tables, comfortable leather seating and custom designed atmospheric lighting, all designed by Tom Dixon.

## Includes

- Dining table (seating up to 22).
- Private south facing terrace.
- Custom designed furniture by Tom Dixon.

## Add Ons

- 55" Samsung HD LCD widescreen TV for £420 inc VAT

\* Additional Charges Apply





Sea Containers London  
20 Upper Ground, London, SE1 9PD

For more information please contact us at  
+44 20 3747 1099  
[events@seacontainerslondon.com](mailto:events@seacontainerslondon.com)

[SeaContainersLondon.com](http://SeaContainersLondon.com)

